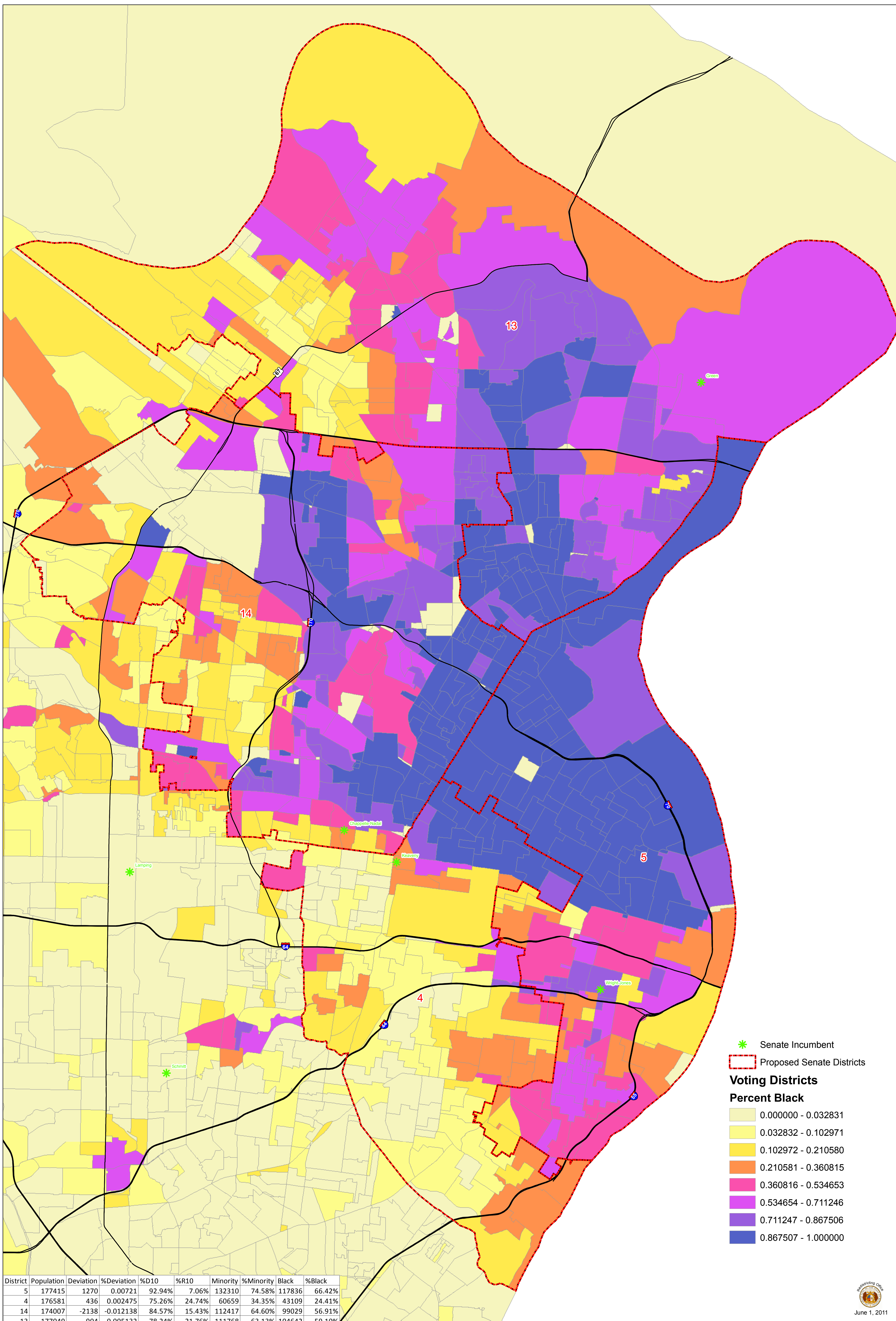


NAACP State Senate Plan (ST. LOUIS REGION)



* Senate Incumbent
 Proposed Senate Districts

Voting Districts

Percent Black

- 0.000000 - 0.032831
- 0.032832 - 0.102971
- 0.102972 - 0.210580
- 0.210581 - 0.360815
- 0.360816 - 0.534653
- 0.534654 - 0.711246
- 0.711247 - 0.867506
- 0.867507 - 1.000000

District	Population	Deviation	%Deviation	%D10	%R10	Minority	%Minority	Black	%Black
5	177415	1270	0.00721	92.94%	7.06%	132310	74.58%	117836	66.42%
4	176581	436	0.002475	75.26%	24.74%	60659	34.35%	43109	24.41%
14	174007	-2138	-0.012138	84.57%	15.43%	112417	64.60%	99029	56.91%
13	177049	904	0.005132	78.24%	21.76%	111768	63.13%	104642	59.10%